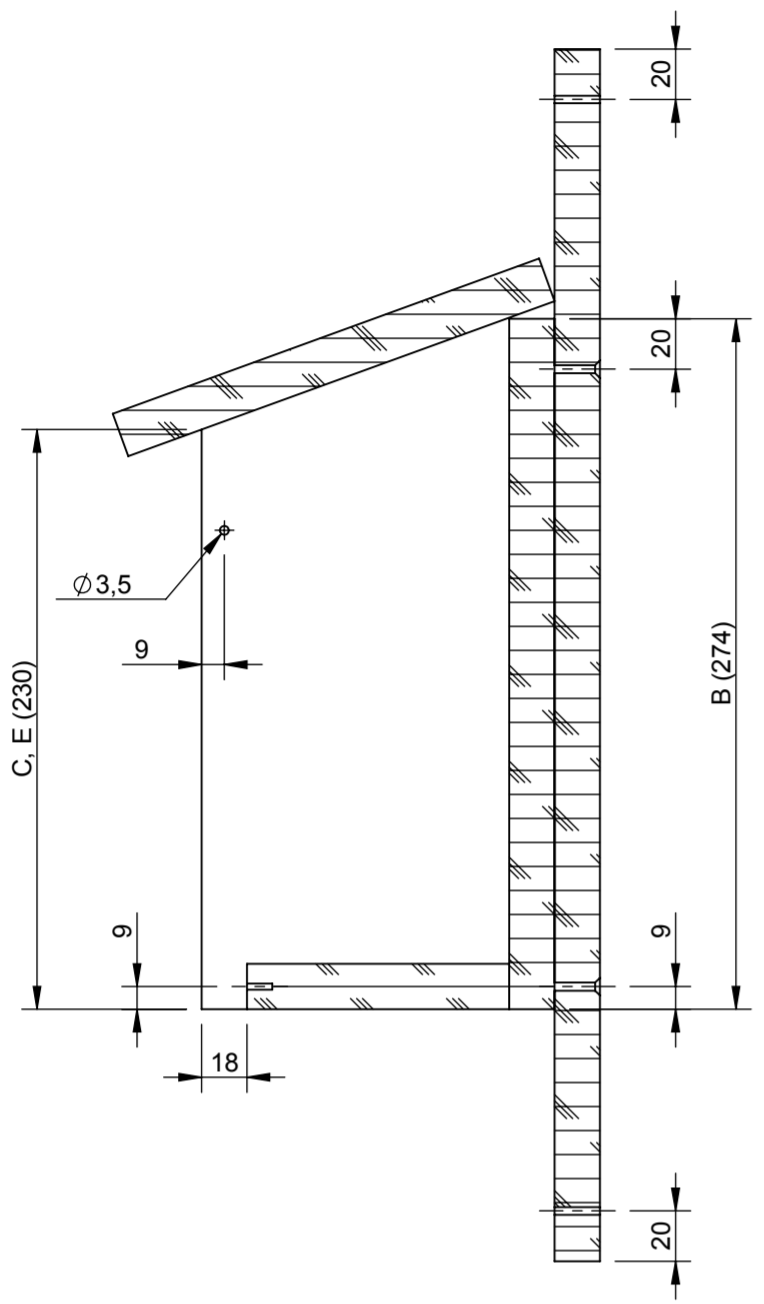
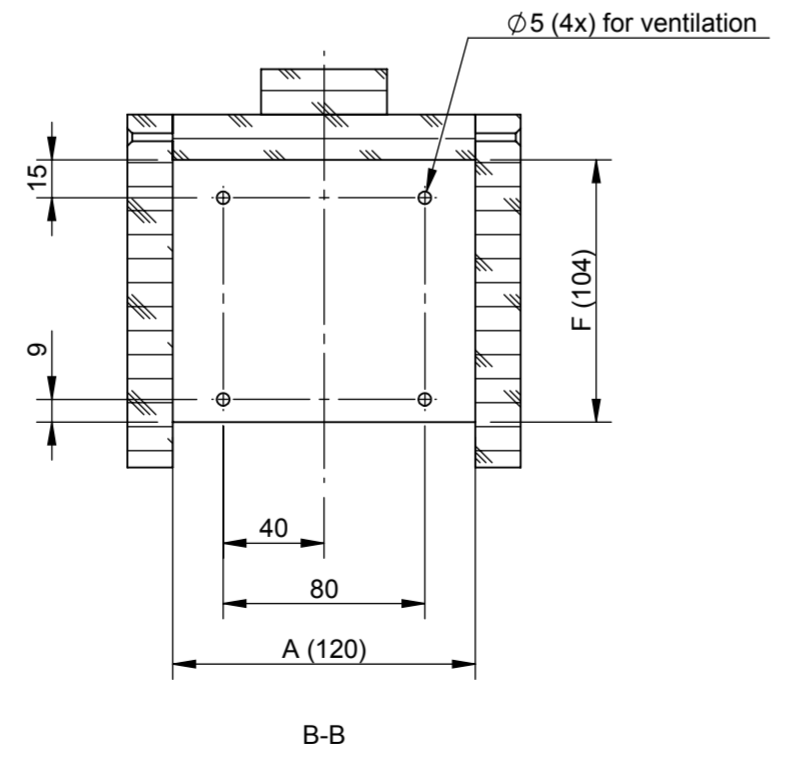
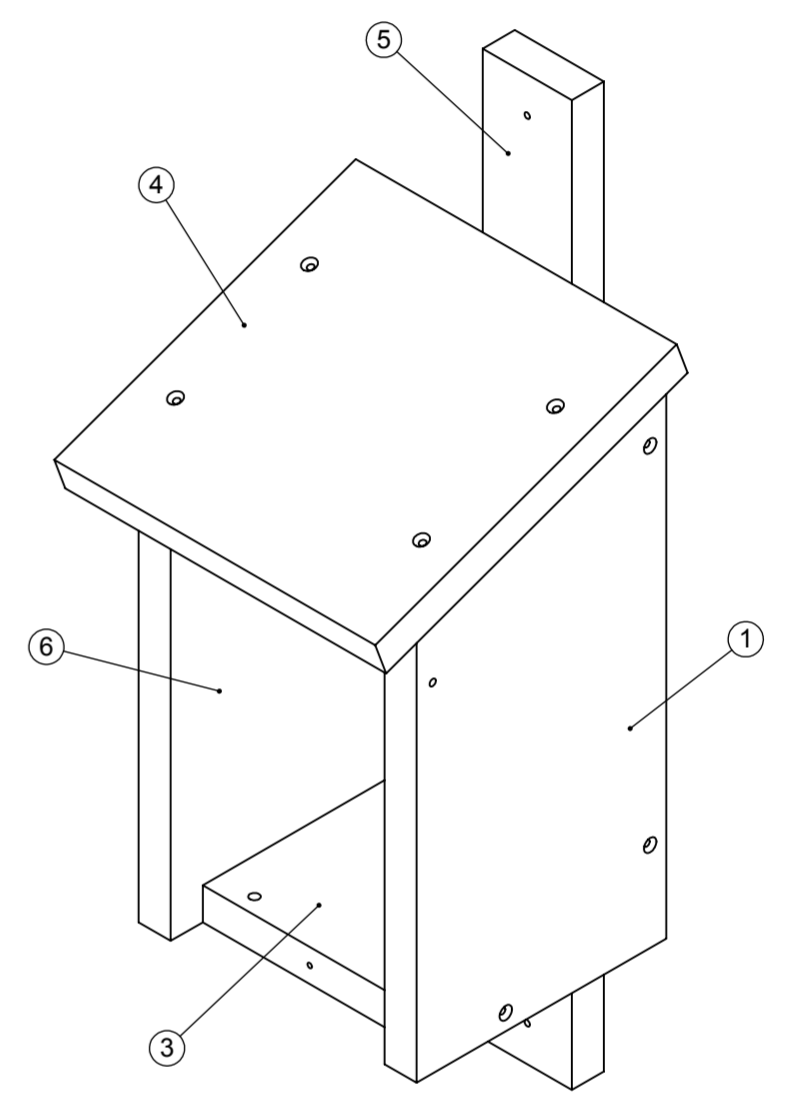
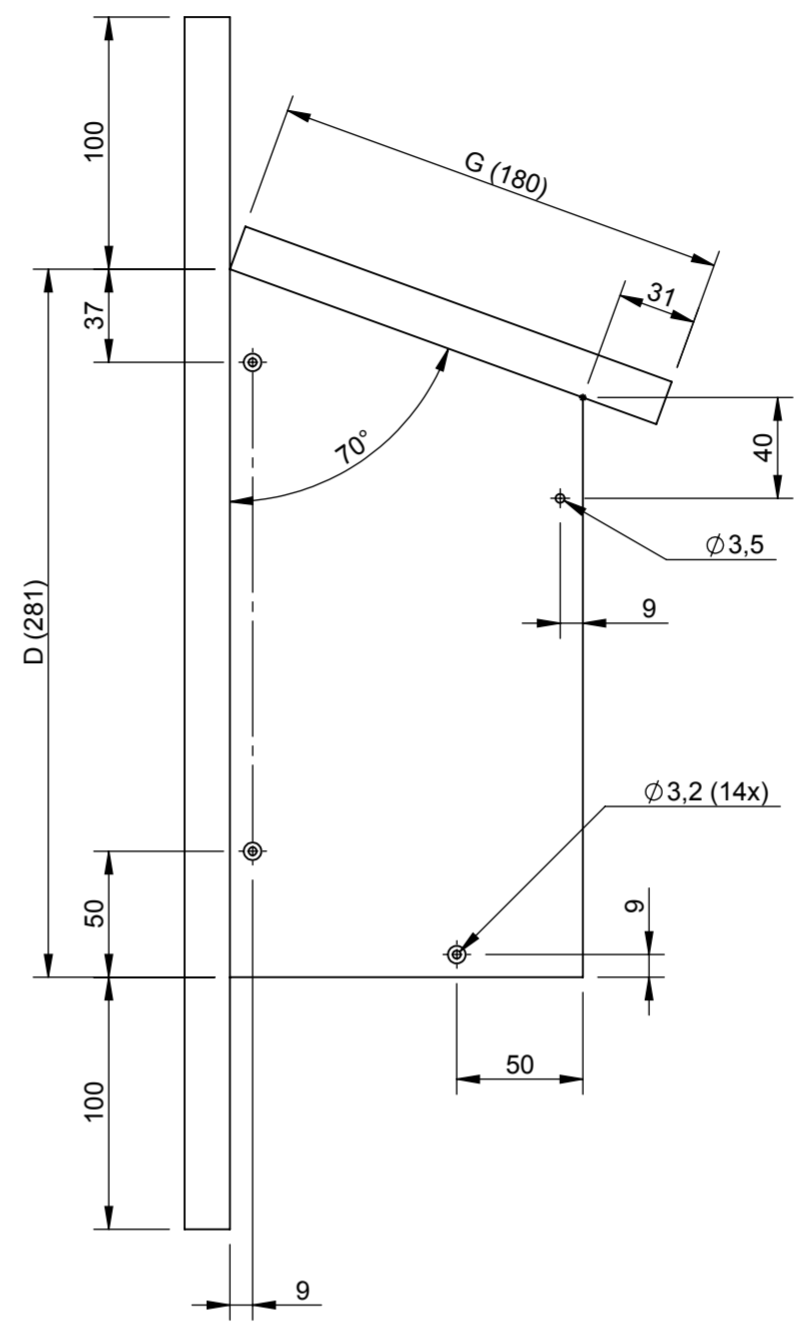
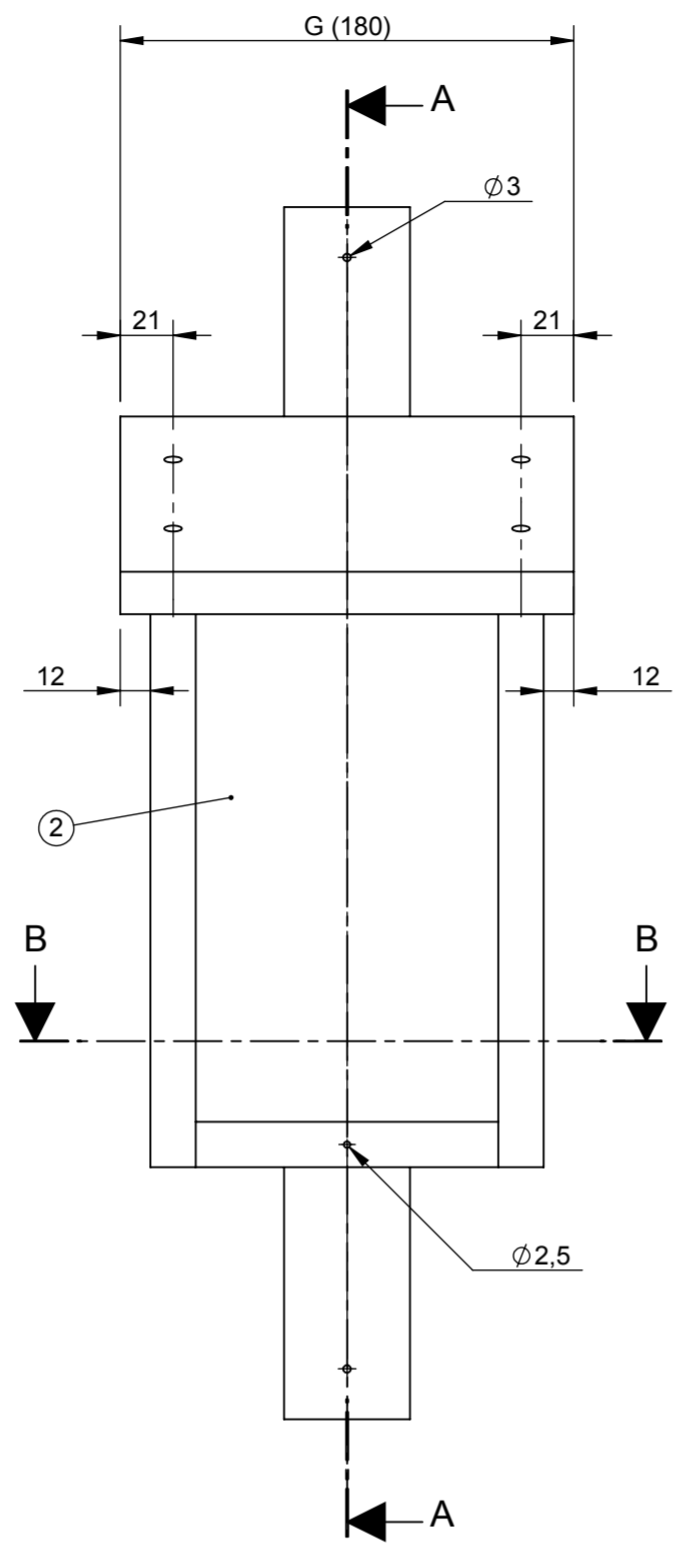


REVISIONS				
Rev.	Description	Date	By	Approved



A-A



B-B

Screws: 14x DIN 7997 3,5x40 fzb; 2x DIN 7996 3,5x50 fzb.

ITEM NO.	QTY.	Description	Thickness	Length	Width
6	1	Side	18		140
5	1	Bracket	18		50
4	1	Roof	18	180	
3	1	Floor	18		2x60
2	1	Back	18		2x60
1	1	Side	18		140

File name: Holk1		File project name/no: -		Project number: -	
Surface finishing: According to contract				Approved / Date:	
Tolerances: According to contract				Design by: MSe	
Welding: According to contract				Weight (Kg): 1.1	
				Created date: 2009-04-22	
				Siste lagring: 2009-04-27 11:42:38	
<b>Holk1 assy.</b>				Material: Pine	
<b>Rödstårt, Blåmes, Entita</b>				Status: -	
This drawing is the property of Martin Schulte and protected by law. This document must not be copied or disclosed to third parties without permission.				Erstatter	
Format: A2	Projection: E	Scale: 1:3	Drawing number: <b>Holk1 assy</b>		Rev. -