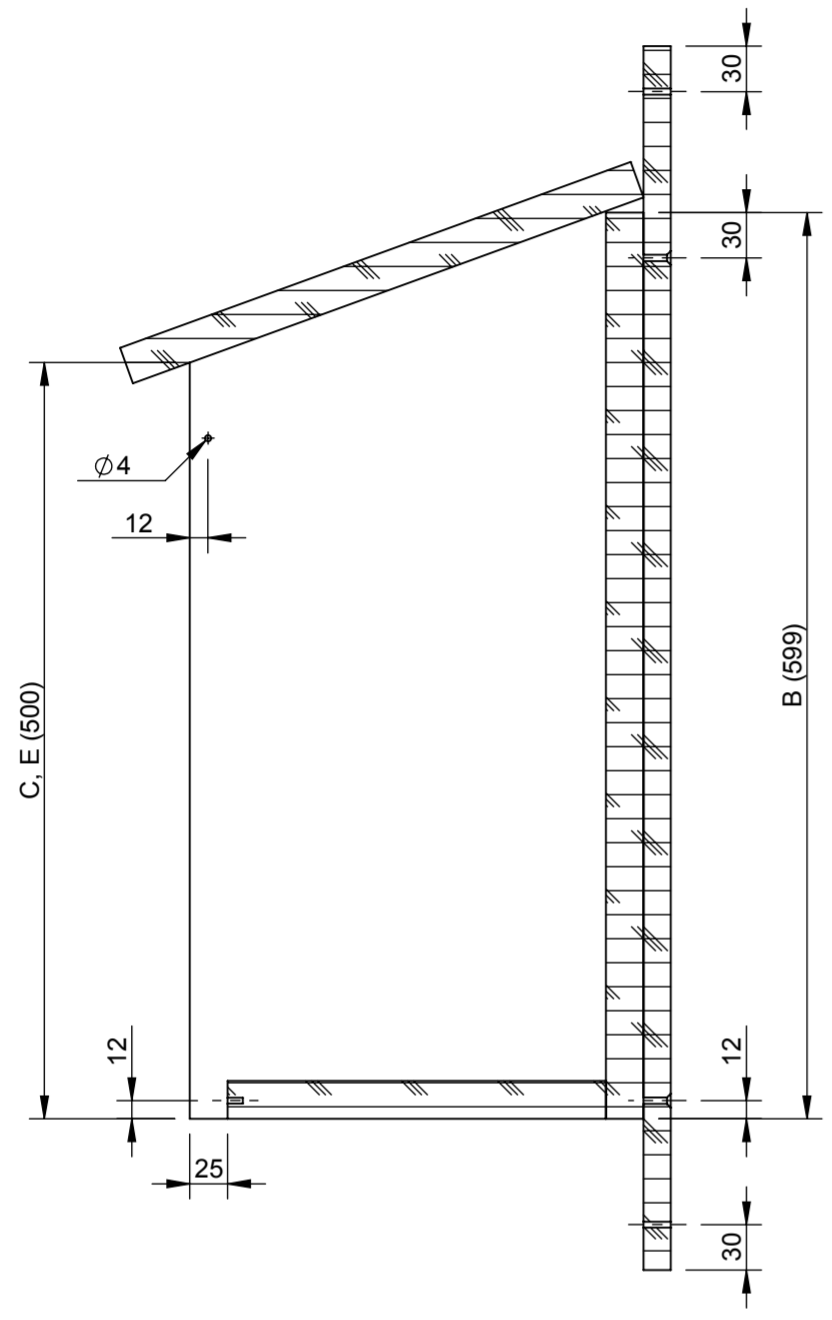
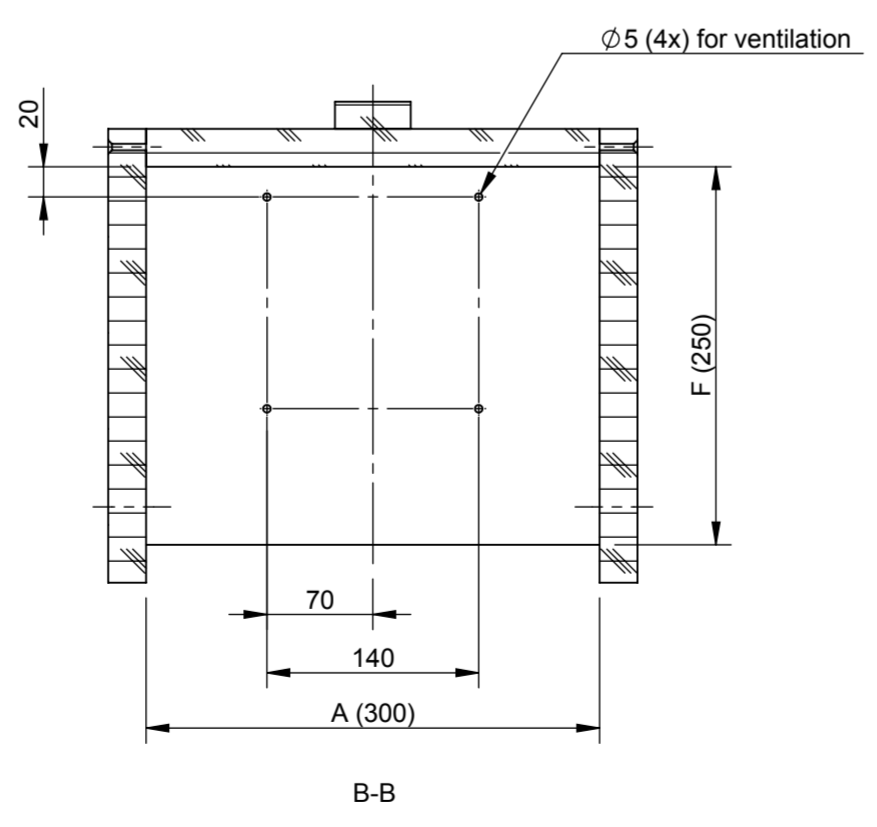
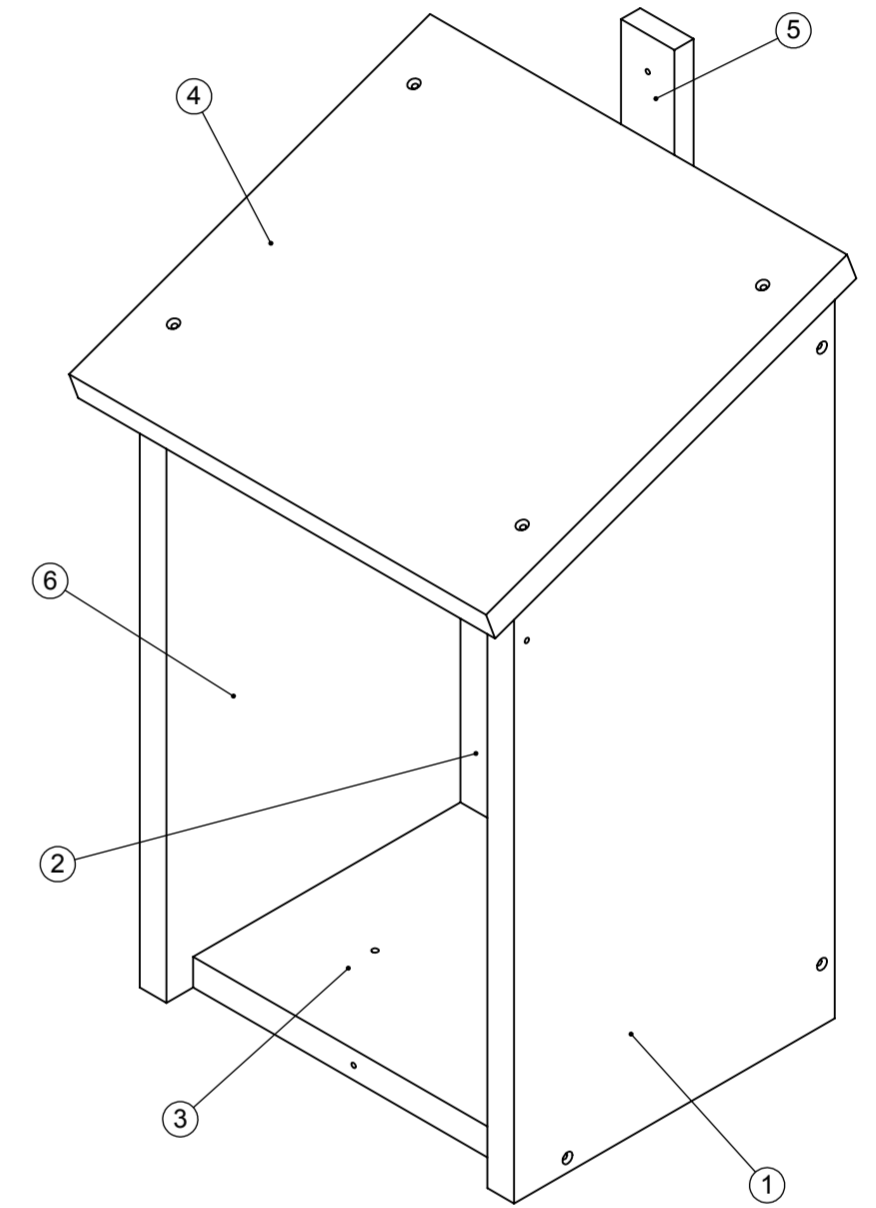
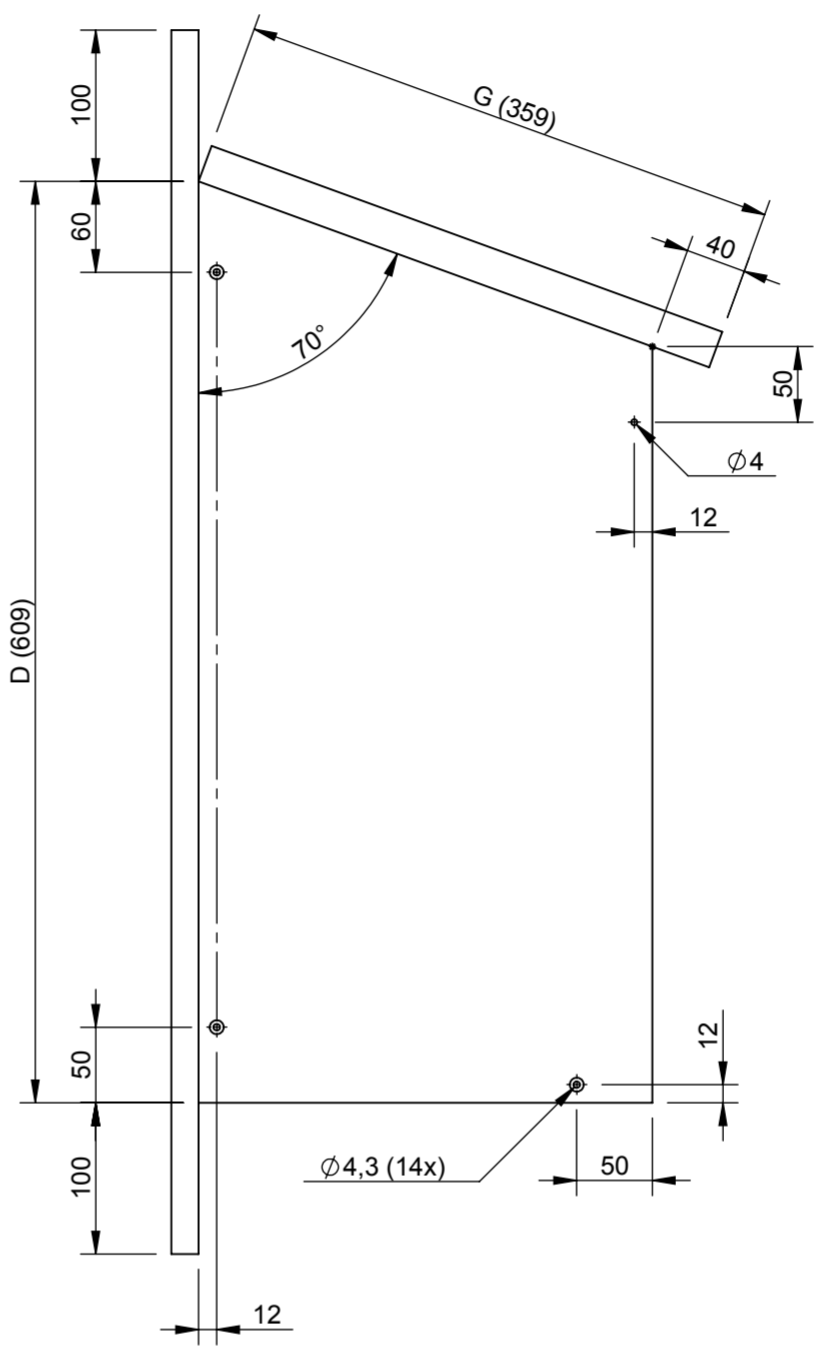
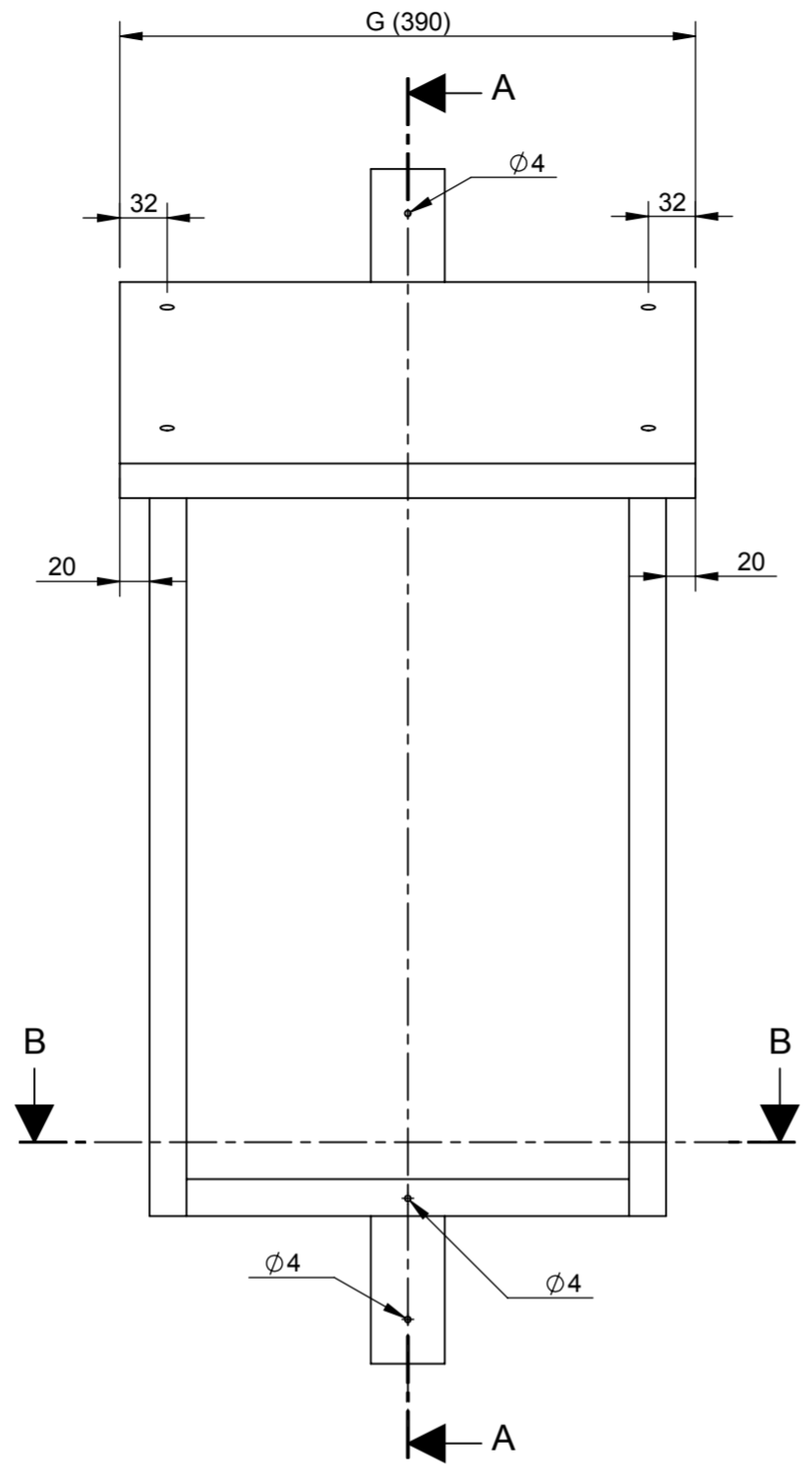


REVISIONS				
Rev.	Description	Date	By	Approved



A-A



B-B

Screws: 14x DIN 7997 4x50 fzb; 2x DIN 7996 4x60 fzb.

ITEM NO.	QTY.	DESCRIPTION	Front height	Thickness	LENGTH	Width
6	1	Side	500	25		300
5	1	Bracket		18		50
4	1	Roof		25		
3	1	Floor		25		
2	1	Back		25	-	
1	1	Side	500	25	-	300

Weldment Cut List			
File name: StorHolK1	File project name/no: -	Project number: -	Approved / Date:
Surface finishing: According to contract			Design by: MSe
Tolerances: According to contract			Weight [Kg]: 6.4
Welding: According to contract			Created date: 2009-04-24
			Status lagring: 2009-04-27 14:20:52
<b>StorHolK1 assy.</b>			Material: Pine
<b>Frame Kattuggla</b>			Status: -
This drawing is the property of Martin Schulte and protected by law. This document must not be copied or disclosed to third parties without permission.			Erstatter
Format A2	Projection E	Scale 1:5	Drawing number: <b>StorHolK1 assy</b>